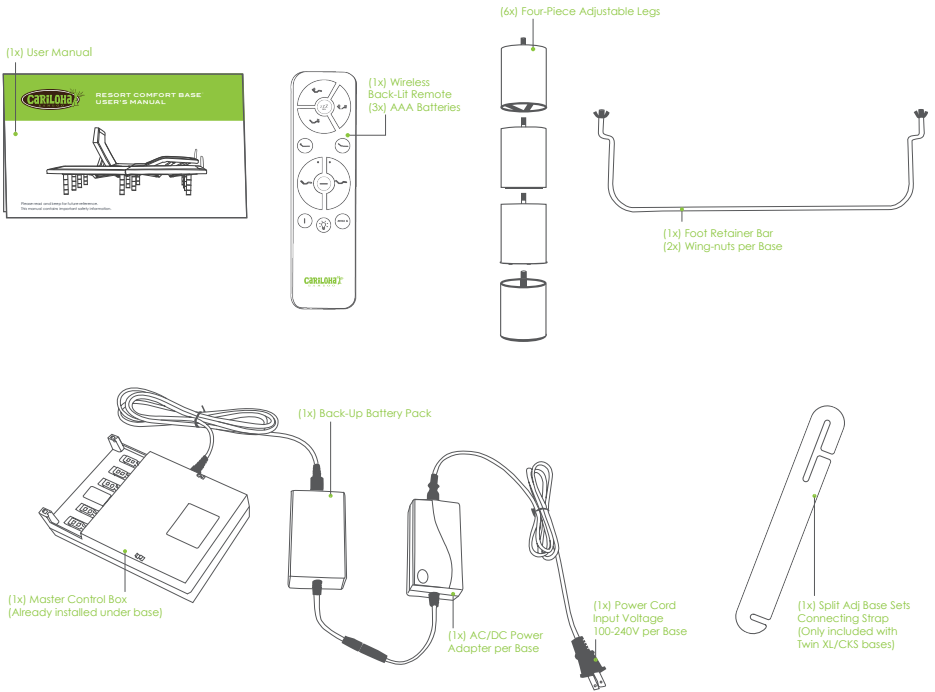




# RESORT COMFORT BASE™ QUICK ASSEMBLY GUIDE

## NO TOOLS REQUIRED FOR ASSEMBLY

Use caution at pinch points while unfolding the base as parts may have shifted during shipping.  
Unpack components for assembly:

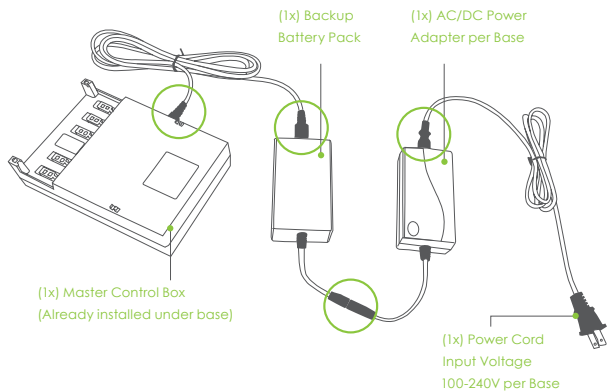


## STEP 1: POWER CORD SET UP

CAREFULLY open the adjustable bed base into an L position on its side or lay flat with the bottom facing up. This step may require two adults for safety.

Ensure all power cord connections circled in the right are completely plugged-in.

Installation of the Backup Battery Pack is optional. Only put batteries into the Backup Battery Pack during an electrical outage and after the power cord is unplugged from a power source. Leaving in the 9 Volt batteries in the Emergency Battery Back Up Box after power has been restored will cause the electrical components to short out and damage the master controller.





# RESORT COMFORT BASE™ QUICK ASSEMBLY GUIDE

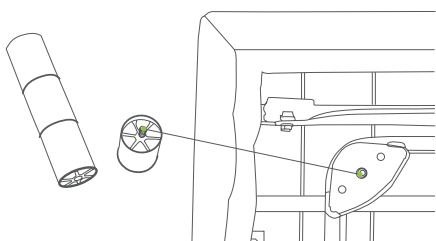
## STEP 2: ASSEMBLE LEGS

Locate the legs and choose one of the heights. Make sure the leg with the solid end is touching the floor.

Screw six legs into the pre-drilled holes by hand. All legs must be installed and resting evenly on the floor. The base will not operate properly without the legs.

The legs must be a minimum of 6" to maintain articulating clearance and must not exceed 12"; anything taller is considered unstable.

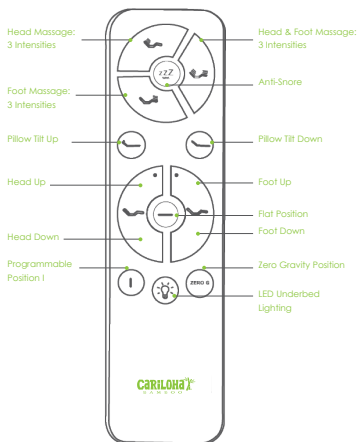
Violating any of the safety guidelines may result in damage or injury, void the warranty for improper use and may cause damage to the floor.



## STEP 3: INSTALL REMOTE BATTERIES

Locate the wireless remote control and insert (3x) AAA batteries (included). The remote control is pre-programmed to work with the adjustable bed base.

If you have more than one adjustable bed base, each remote control and adjustable bed base set should be pre-programmed to work separately. This will prevent both beds from being controlled by one wireless remote control.



## STEP 4: INSTALL MATTRESS RETAINER BAR

Slide the retainer bar into the opening at the foot of the bed. Secure the retainer base (Figure 1) with the included wing-nuts (Figure 2).

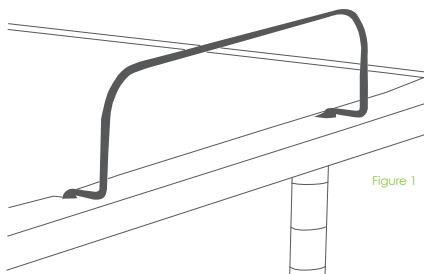


Figure 1

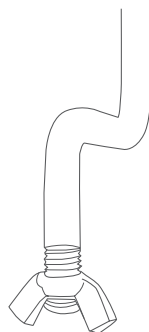


Figure 2

## STEP 5: RETURN TO UPRIGHT POSITION

CAREFULLY place the adjustable bed base onto all six legs and plug the power cord into a power outlet. Place a mattress on the adjustable base once the bed is plugged in and functioning correctly. Use a memory foam, latex or acceptable hybrid mattress at least 8" in height.

See manual for Connecting Strap and Sync cable instructions for Split King/Cal King Bases.